

08.20.2024
BCDC Meeting
262 St. Botolph Street

Northeastern University Multipurpose Facility

N

Perkins&Will

D/R/E/A/M
COLLABORATIVE

studio2112
LANDSCAPE
ARCHITECTURE


HOWARD STEIN HUDSON

samiotes 

Project Site & Context

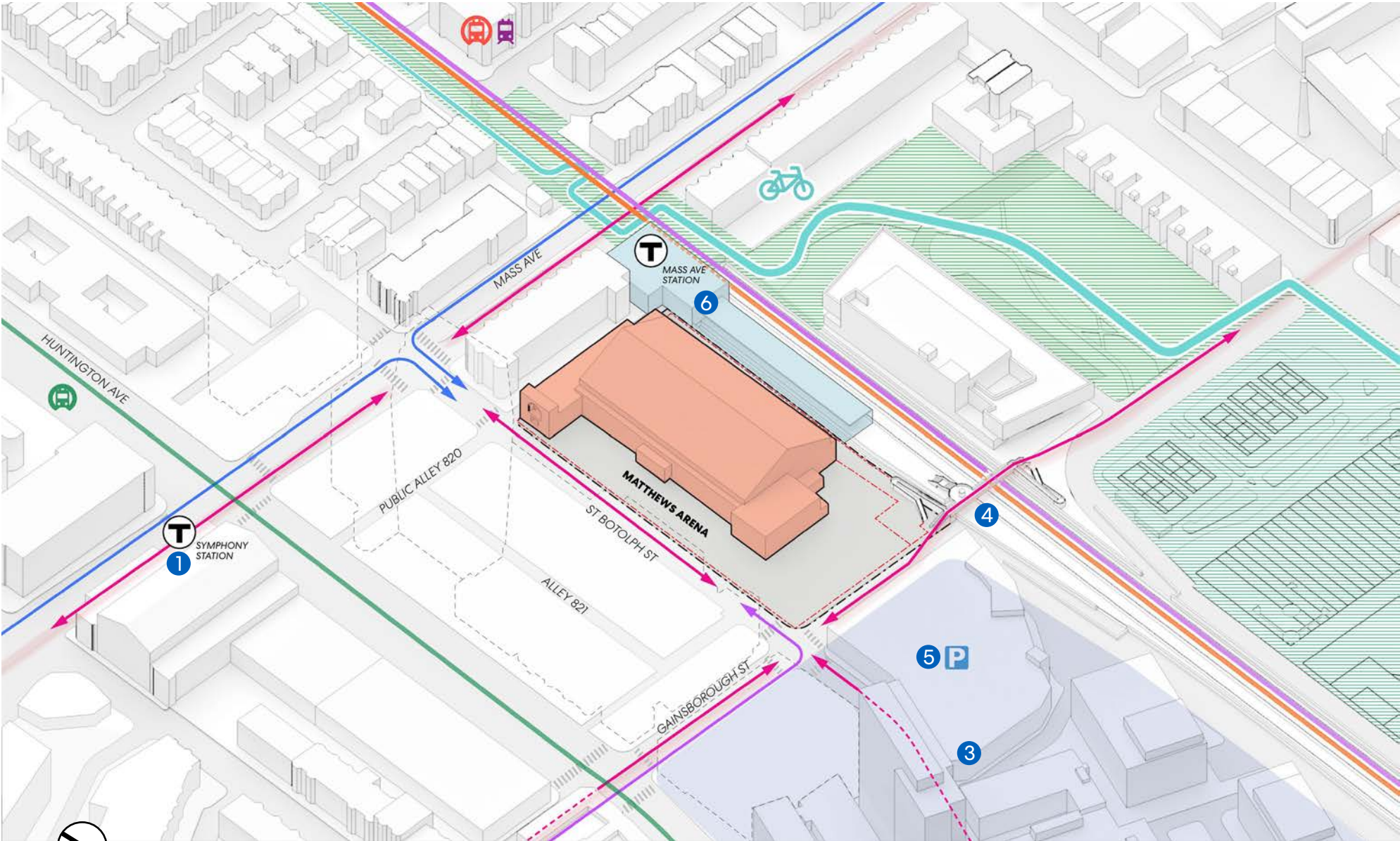


What We Heard – Key Issues To Address

- Materiality and Color (Cool/Dark) of Building Massing
- Scale and Configuration of the Proposed Open Space (Gainsborough and St. Botolph Streets)
- How Does the Facility Express the Movement and Activity of its Use?
- Additional Information on the Concept for the Proposed Facility. What is the Generative Thrust of the Design?
- What Does the History of the Site Mean to this New Building?



Proposed Massing & Site Context



- Key:**
- ↔ Pedestrian Routes
 - ↔ Commuter Rail
 - ↔ Green Line
 - ↔ Orange Line
 - ↔ Southwest Corridor
 - ▭ Pedestrian Area, Prohibited/Restricted Vehicular Access
 - ← Vehicular Access from Mass Ave
 - ← Vehicular Access from Huntington
 - ① Green Line - Symphony
 - ② Green Line - NU
 - ③ Campus
 - ④ Orange Line - Mass Ave Bridge
 - ⑤ Campus Parking
 - ⑥ Orange Line - Mass Ave

East End
Framework Plan



Site Relationships



LEGEND

- PEDESTRIAN ROUTES
- COMMUTER RAIL LINE
- GREEN LINE
- ORANGE LINE
- SOUTHWEST CORRIDOR
- PEDESTRIAN AREA, PROHIBITED/ RESTRICTED VEHICULAR ACCESS
- 1 PEDESTRIAN BRIDGE
- 2 PEDESTRIAN ROUTE TO CAMPUS AND CABOT ATHLETIC CENTER
- 3 FUTURE MBTA IMPROVEMENTS
- 4 PUBLIC REALM / ENTRY
- 5 LOADING AREA

Exterior Materials

Campus Context



Exterior Materials

Campus Context



EXTERIOR
NW Corner Aerial



Exterior Materials

Ironspot Brick Precedent (Color/Sheen)

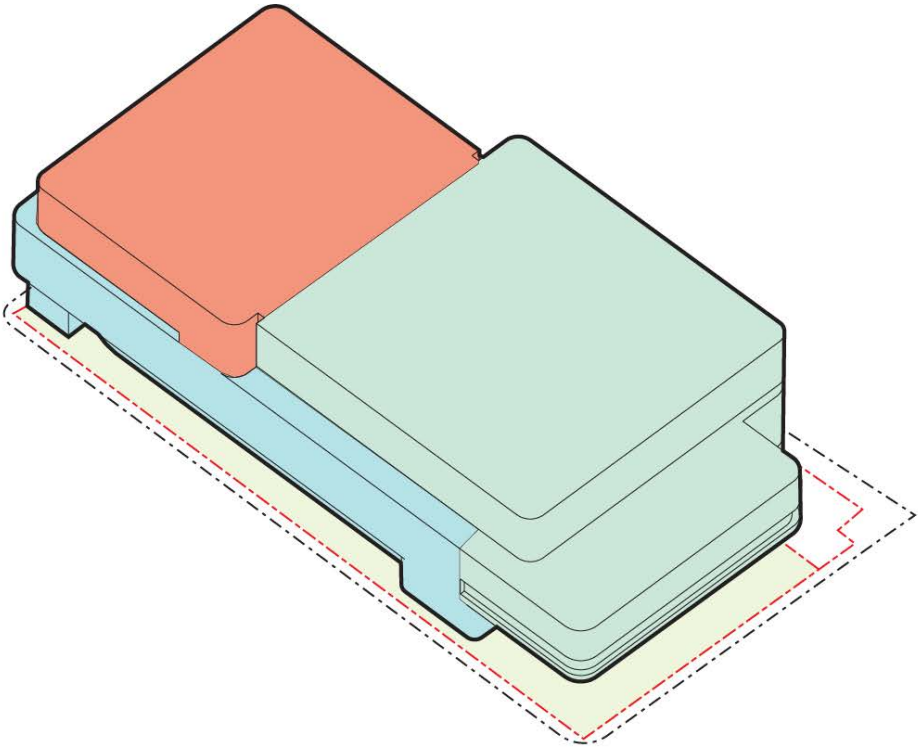


EXTERIOR

NW Corner (Looking Down St Botolph)



Massing Organization



Integrated



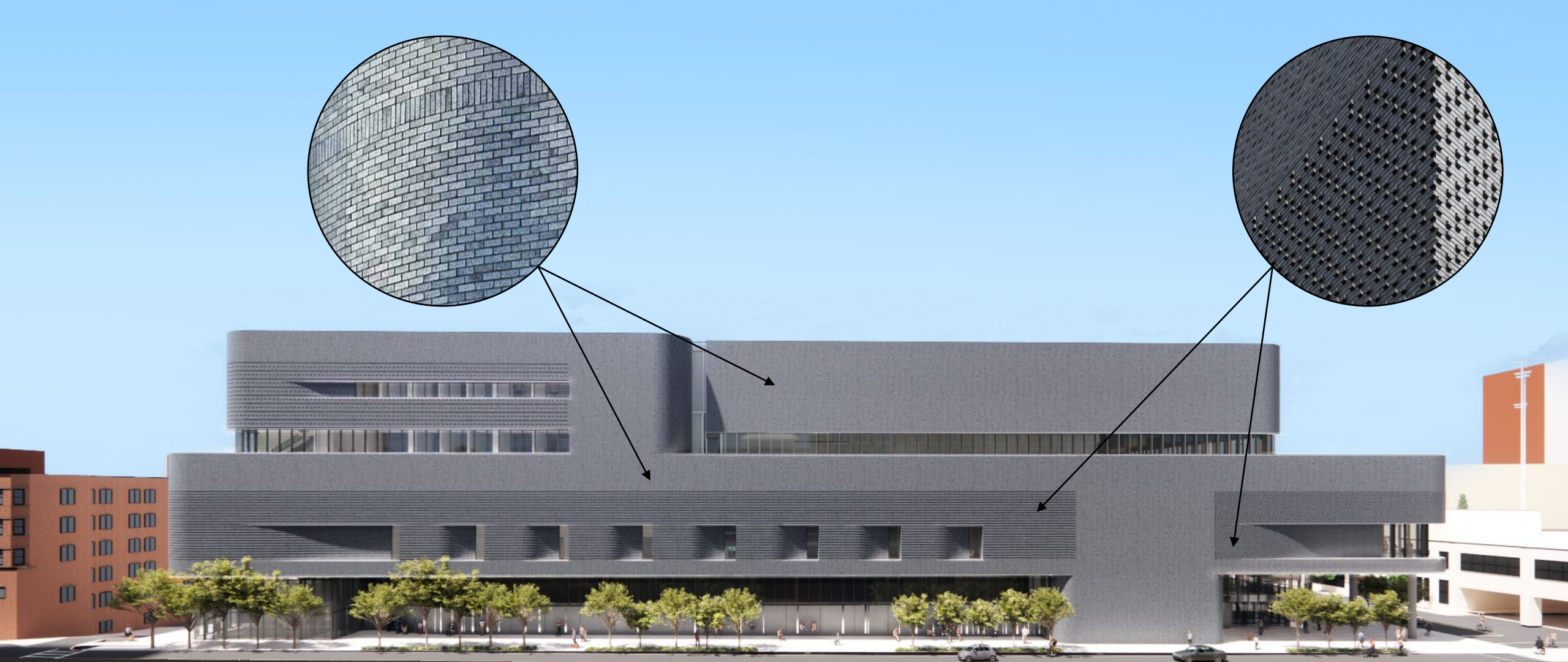
Arena



Recreation
Center



Team Facility



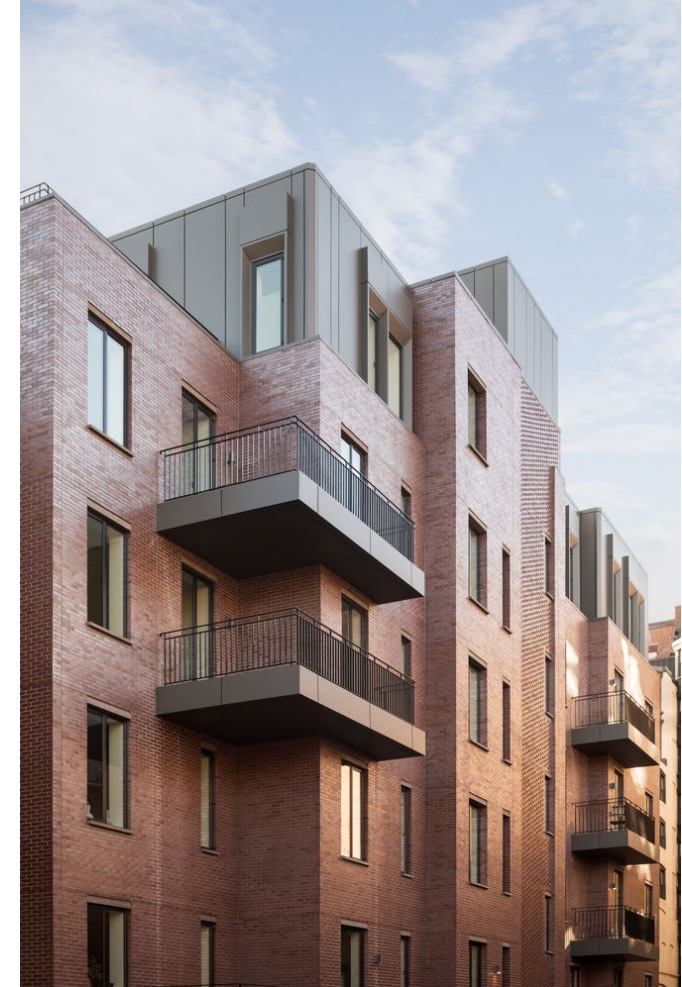
EXTERIOR
NE Corner





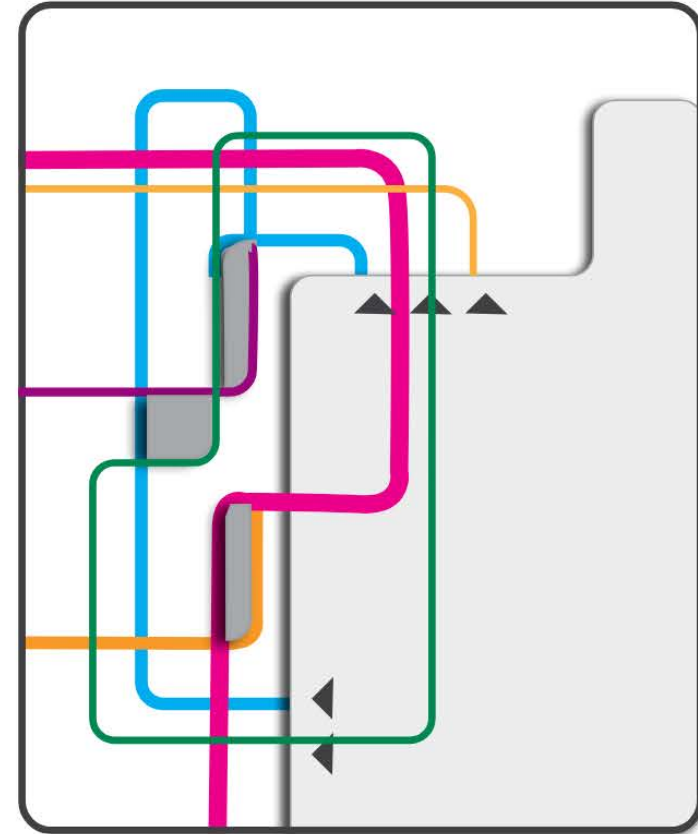
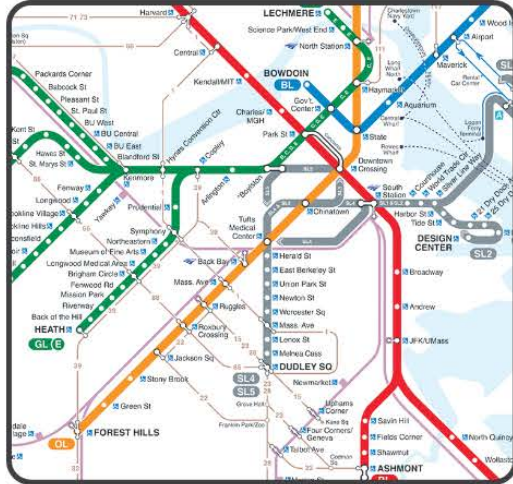
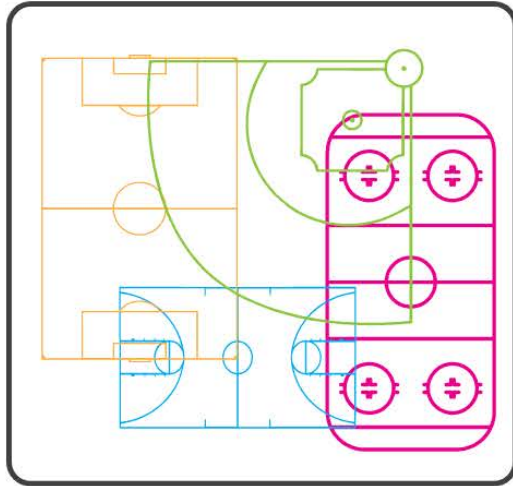


BRICK EXAMPLE – MEDIUM IRONSPOT



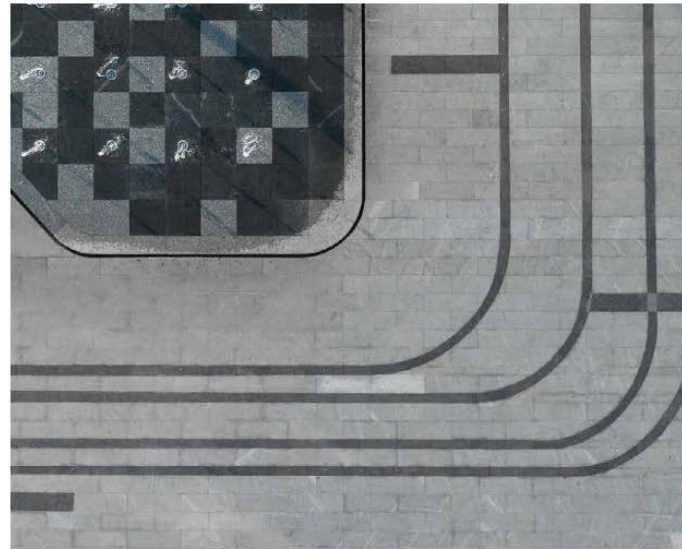
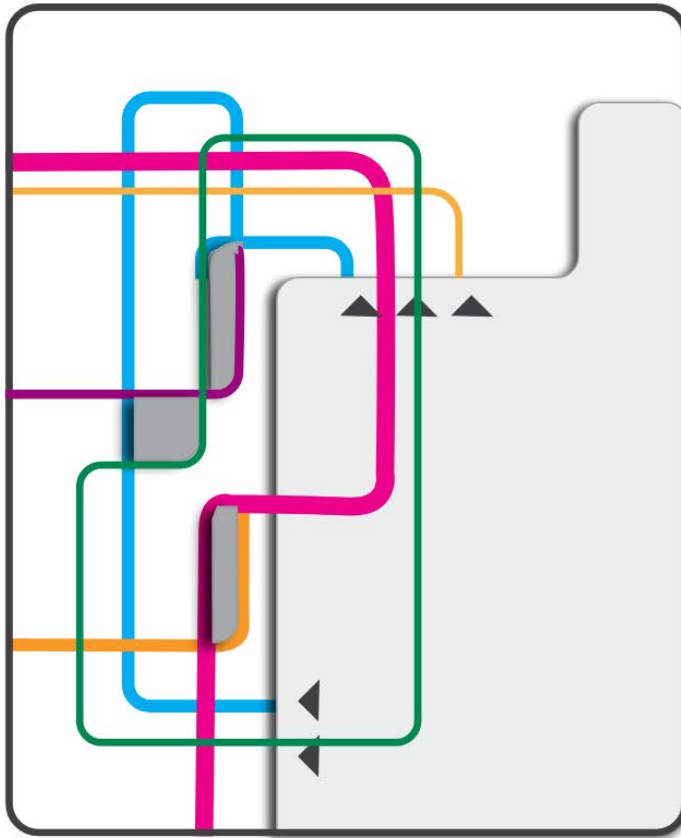
Urban Activation

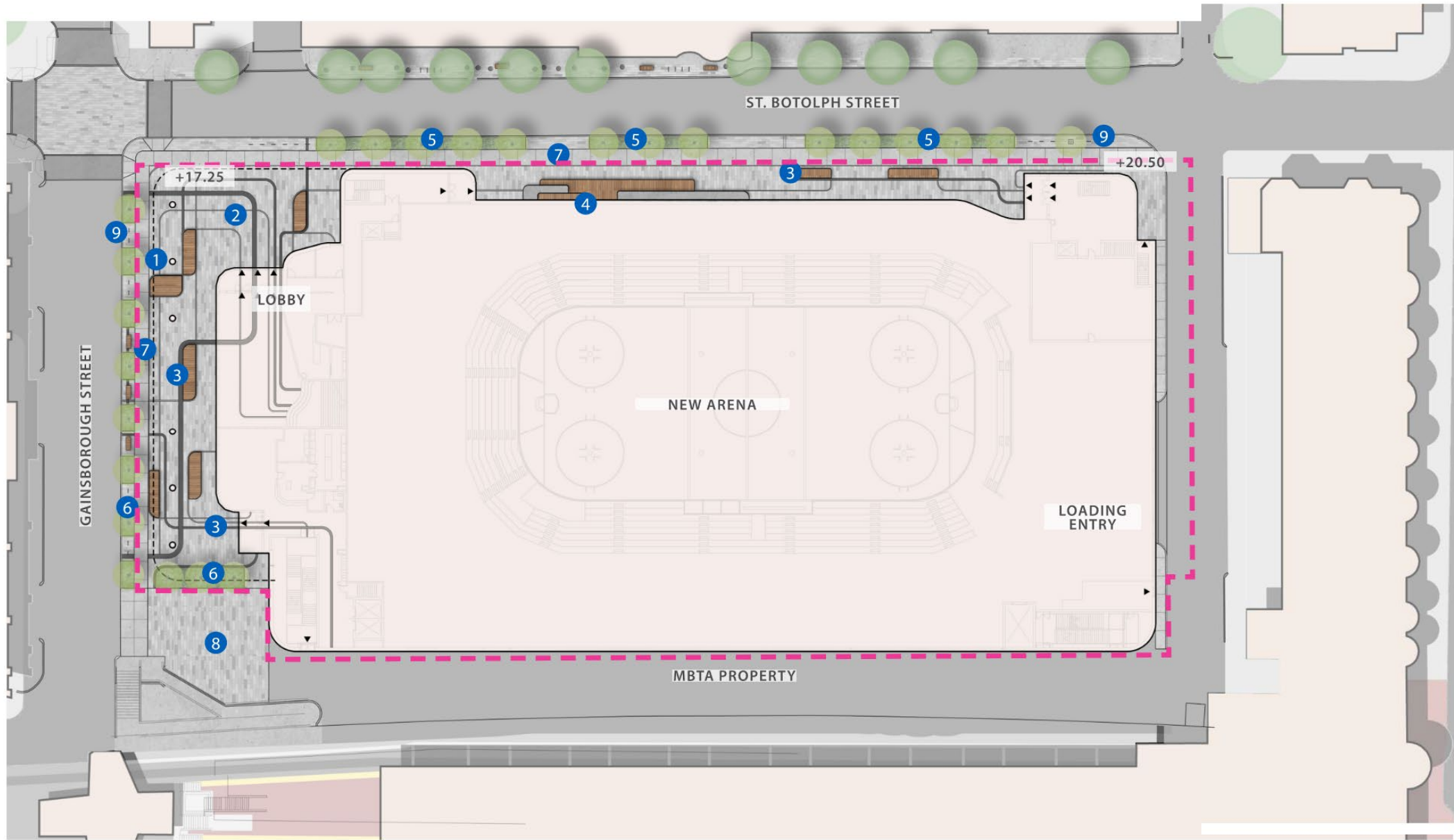
A diagram consisting of three red arrows forming a triangle. One arrow points from the top-left towards the center-right. A second arrow points from the top-right towards the center-left. A third arrow points from the bottom-left towards the center-right. The text 'Urban Activation' is centered within the space defined by these arrows.



LANDSCAPE DESIGN CONCEPT

NORTHEASTERN UNIVERSITY NEW ARENA
AUGUST 14, 2024





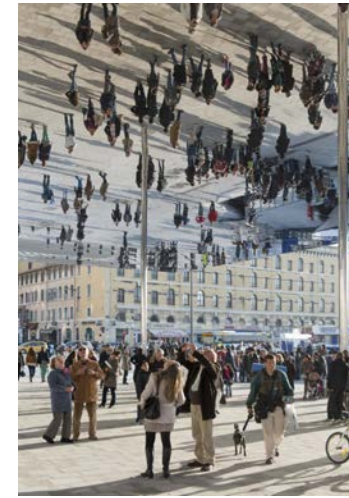
- LEGEND**
- Property line
 - 1 Building overhang
 - 2 Dynamic paving pattern relating to circulation
 - 3 Raised benches
 - 4 Raised platform/terracing relating to building
 - 5 Biofiltration with salt tolerant native planting
 - 6 Street trees with vegetated tree pits
 - 7 City concrete sidewalk - 6' clear concrete path of travel
 - 8 Plaza paving to continue within MBTA property
 - 9 Street furnishing with benches and bike racks



LANDSCAPE PLAN

NORTHEASTERN UNIVERSITY NEW ARENA
AUGUST 14, 2024

MIRRORED MATERIAL PRECEDENTS





LANDSCAPE PAVEMENT LAYERING - PRECEDENTS

NORTHEASTERN UNIVERSITY NEW ARENA
AUGUST 14, 2024

Exterior
NW Corner Lobby



Exterior
NW Corner Lobby





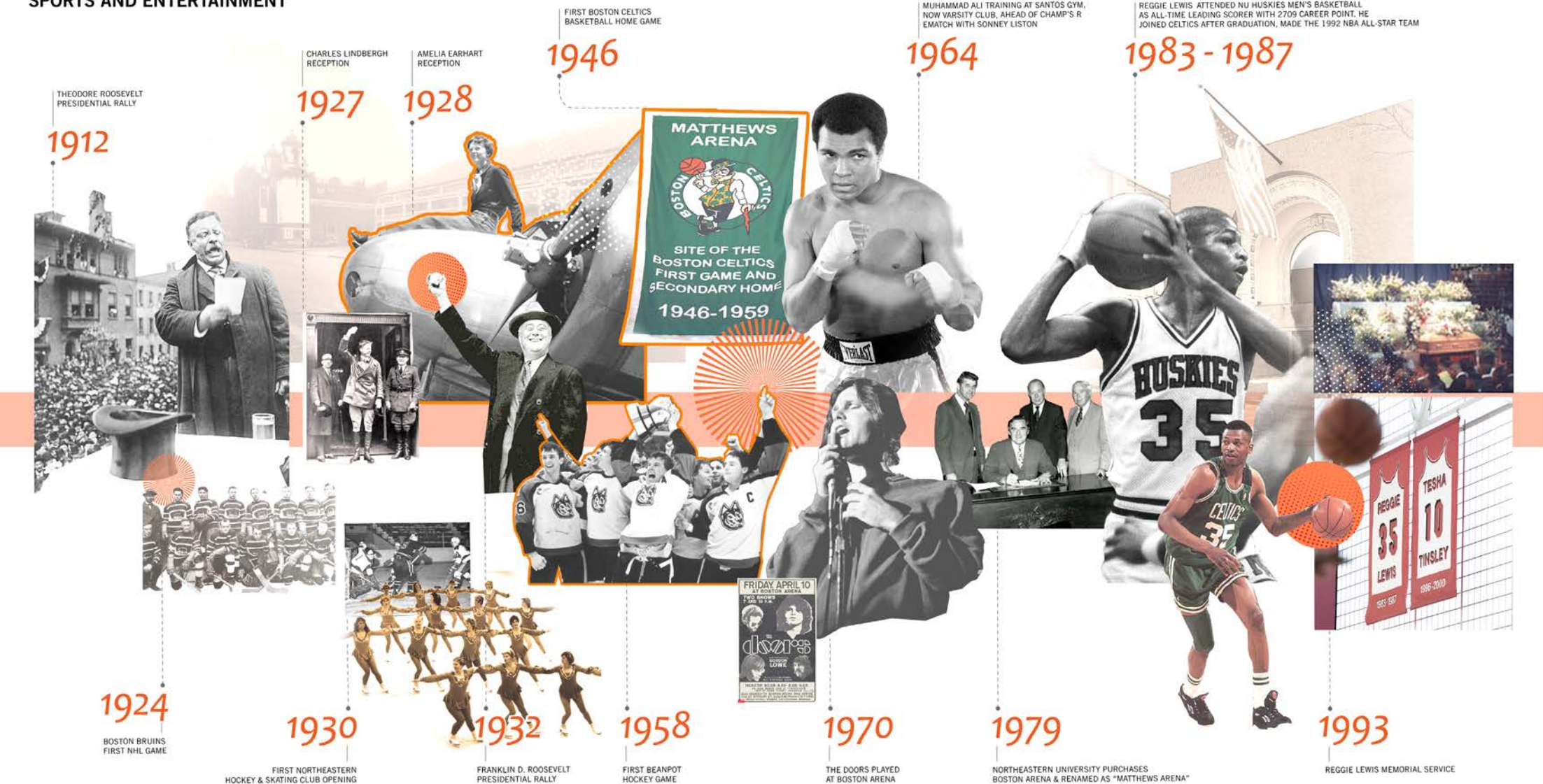
20'

23'

History of Place

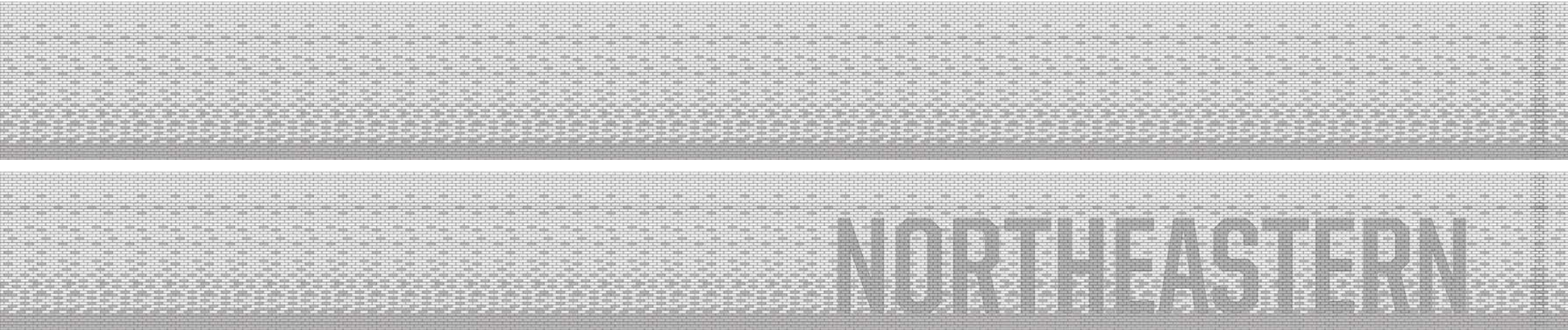
Narrative

NOTABLE HISTORY / SPORTS AND ENTERTAINMENT



EXTERIOR – REFLECTIVE SPACE

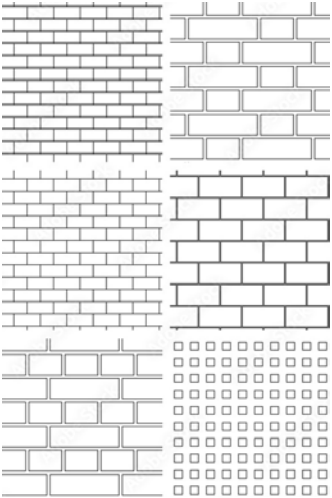
NE Corner Entry



History / Timeline Inspiration



Reflective Brick Examples



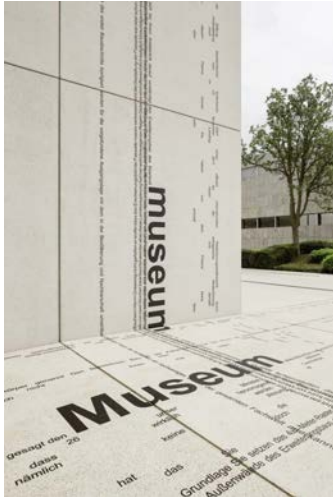
EXTERIOR – REFLECTIVE SPACE
NE Corner Entry



EXTERIOR – MURAL SOFFIT

NE Corner Entry

History / Timeline Inspiration



Canopy Mural Examples



EXTERIOR – MURAL SOFFIT
NE Corner Entry



EXTERIOR – STUDENT USE
St B Street Edge



EXTERIOR
NW Corner – Night





Viewsheds

EXTERIOR

View from Campus Quad



EXTERIOR

Approach from Campus



EXTERIOR

View from Carter Fields



EXTERIOR

View from Carter School





EXTERIOR

View from Mass Ave T Stop



EXTERIOR

View from Huntington Ave

